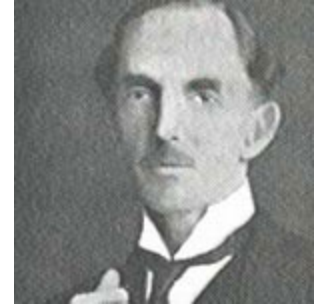


Pastor Myung Gu Han (韩明九)

Pastor Han is an ordained Presbyterian pastor who served in the Korean Army as an Army Chaplain and served sailors from all over the world at the port of Long Beach and Los Angeles as a port chaplain. He and his wife Joyce spent many years planting and multiplying indigenous churches in China. The mission to China was a great joy for him that brought forth perseverance. He is currently a Director of Asian American Mobilization and a Deputy Sending Base Leader of the WEC International USA.



A Brief History of Worldwide Evangelization for Christ (WEC International)

WEC International has always been a pioneer mission – sharing Jesus across cultural barriers where he's least known.

In 1913, Charles Thomas Studd, the England cricketer (one of the Cambridge Seven) who had already served Christ in China and India, felt God calling him to pioneer a new mission. Passionate to see Africans worshipping Christ, this 53-year-old man of suspect health set sail for the heart of Africa. During the journey God told CT that his trip would not be just for Africa, but for the whole world.



God kept his word. He turned one man's crazy adventure into a mission and a movement that has since touched millions of lives. Before CT's death, teams of missionaries had joined WEC to work in Central and West Africa, Amazonia, the Middle East and the Himalayan region.

Each decade has brought fresh challenges and new opportunities for the gospel. In the past 20 years WEC has expanded as men and women have sensed God's call to take the Gospel to the least reached in the **10/40 window**.

"If Jesus Christ be God and died for me, no sacrifice can be too great for me to make for him." This was CT Studd's answer to the many who said he was too old, sick and crazy to pioneer such a mission – and it continues to be WEC's motto.